

Standard Capacity Station (SC5.5)

Bigbelly's SC5.5 is a smart, fullness-sensing waste station that is anything but standard. This non-compacting model holds 2-3X real capacity of a traditional bin, and is equipped with sensors that monitor and report fullness levels and collection activity. It is battery powered to communicate its real-time status. The SC5.5 has an enclosed hopper option for total waste containment. This model maintains the durable, high quality and design integrity of all Bigbelly smart stations, and can be customized based on waste stream, options, and accessories.



50 GALLON
CAPACITY



BATTERY
POWERED



SMART
STATION



FULLNESS
SENSING

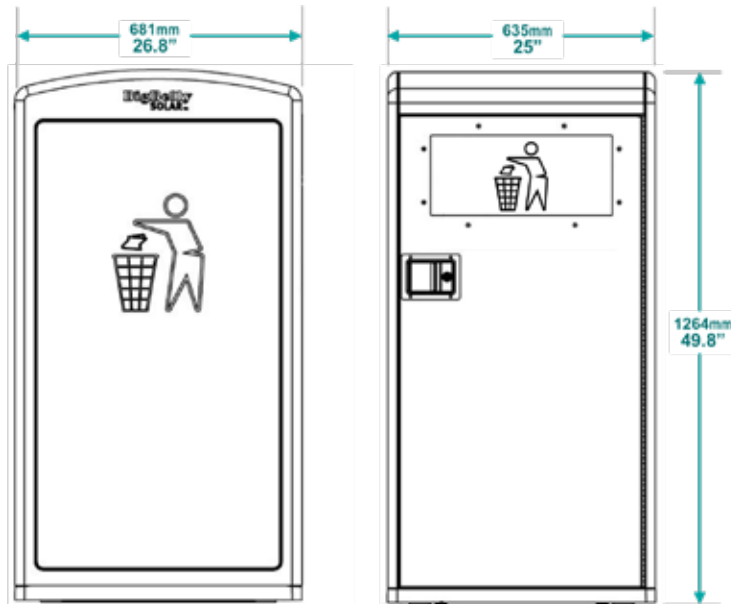


ONBOARD
GPS



CELLULAR
CONNECTION

Technical Specifications



Overall Machine Dimensions

- Height: 49.8" (1264 mm)
- Width: 25" (635 mm)
- Depth: 26.8" (681 mm)
- Handle Height (ADA Compliant): 43.1" (1095 mm)
- Weight: 150 lbs (68 kg)
- Shipping weight: 180 lbs (82 kg)
- Insertion Opening: Can be configured for variety of recycling / waste streams.
- Bin Volume: 50 gallons (189 L)
- Bin Dimension: 25" x 20" x 32.25"
(635 mm x 508 mm x 819 mm)

Waste Streams: Mixed Waste Trash, Single Stream / Paper / Bottles & Cans Recycling, or Compost / Organics (with appropriate markings).

Options: See options and accessories on next page.

Standard Capacity Station (SC5.5)

*Smart, Battery-Powered,
Non-Compacting Model
(50 Gal / 190 L)*



www.bigbelly.com | info@bigbelly.com
+1-781-444-6002 | © 2018 Bigbelly, Inc.

Standard Capacity Station (SC5.5)

Smart, Battery-Powered,
Non-Compacting Model
(50 Gal / 190 L)



www.bigbelly.com | info@bigbelly.com
+1-781-444-6002 | © 2018 Bigbelly, Inc.

Technical Specifications - Continued

SC5.5 Features

- Fully automated, microprocessor controlled system senses fullness and machine status
- Embedded sensors read and report fullness levels, collection activity into integrated software platform
- Patent-pending 'SC Sleeve' ensures data accuracy and prevents false fullness readings due to bag interference
- 4G LTE wireless data link for remote monitoring and management
- GPS assisted location service
- 'Companion' model is also available to couple with either an HC5 or SC5.5 'Hub'
 - Note: Companion models use the power and communication source of their attached hub

Safety Features

- CE approved
- Locked front door accessed via key by collection and service personnel
- Dampened hopper opening with use of foot pedal
- No pinch points, sharp edges or corners

Durability

- Weather resistant, UV stabilized polyester powder-coat finish on all exterior metal parts
- Electronic components temperature range of -40°F to +185°F (-40°C to +85°C)
- Fully weatherized, but in the event of a flood, the component can withstand up to 40" (1.06 m) of water without harming electronics

Opening Options

Enclosed Hopper



Landfill
Waste

Recycling

Compost

Open Faceplate



Landfill
Waste

Single
Stream
Recycling

Bottle &
Cans
Recycling

Paper
Recycling

Materials

- RoHS compliant
- Galvanized sheet metal steel interior and exterior construction
- Heavy duty plastic side panels and top for dent and scratch resistance (recycled content)
- Interior Bin: Leak proof; made of low density polyethylene (LDPE) plastic

Power & Electronics

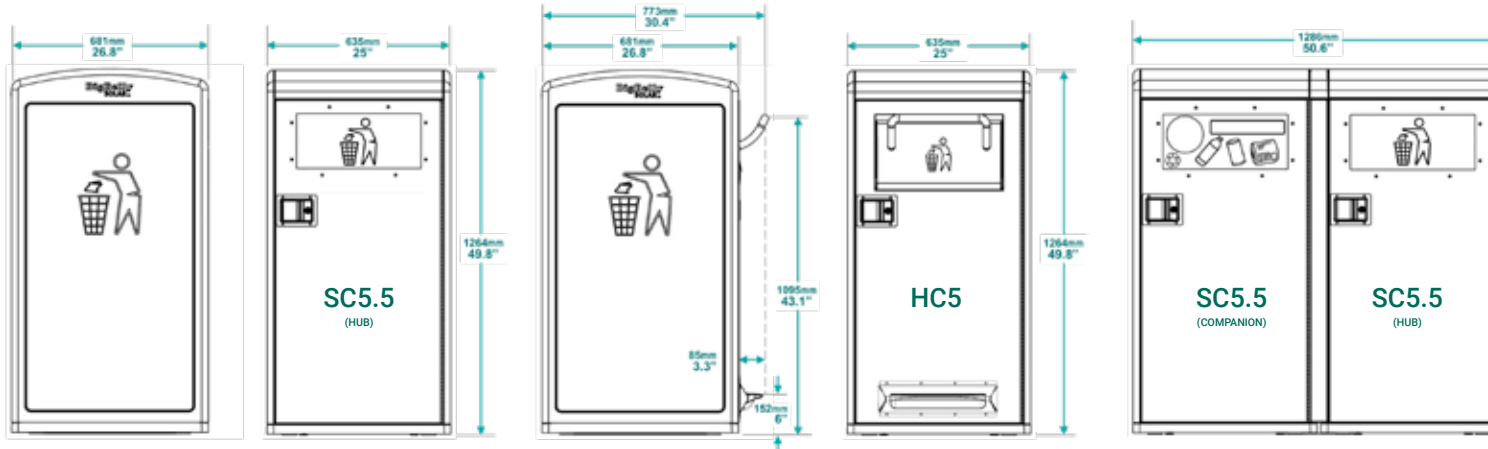
- Single-use Alkaline battery pack
- Battery life: Up to 8 years
- Self-powered unit requires no wiring
- Cordless operation for both indoor / outdoor use

Options & Accessories

- Wheeled Interior Lift Bin (Bar & Comb Styles)
- Enclosed Hopper Opening
- Foot Pedal for Hands-free Use (with Hopper)
- Graphic Wraps, Message Panels, Stickers
- Security System with Physical Plates

Multi-Stream Configurations

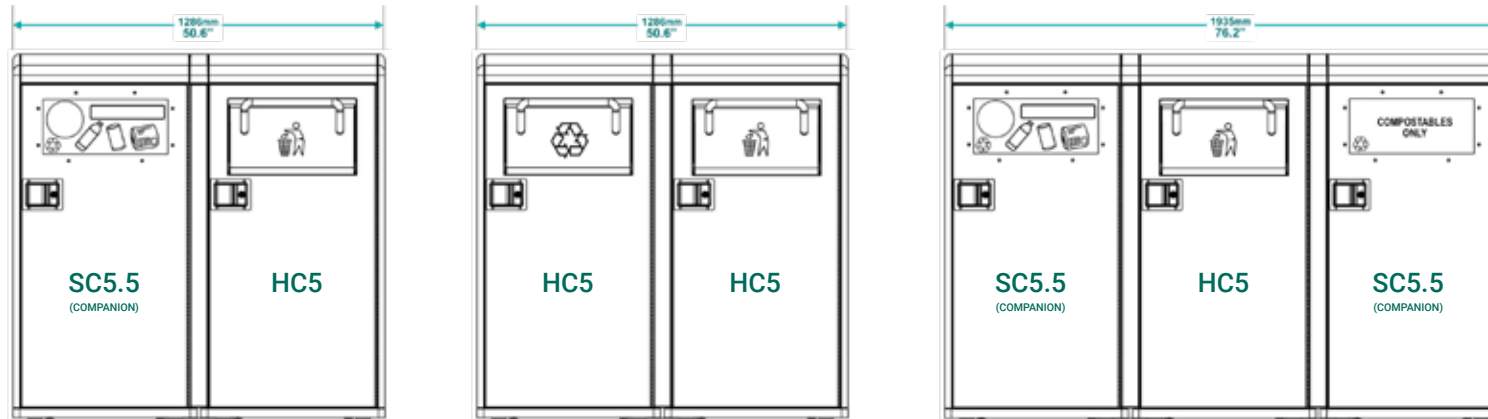
Stations are modular and support any combination of waste streams at each location as **Single, Double, and Triple** station configurations. A fleet may be comprised of a variety of stations in order to meet the unique needs of each area. Customize each station by selecting components' **capacity** (HC5 or SC5.5) and **waste stream** (Trash, Single Stream / Paper / Bottles & Cans Recycling, or Compost/Organics; see next page for available streams per model).



SC5.5 Single Station
Approximately 150 lbs (68kg)

HC5 Single Station
Approximately 270 lbs (122 kg)

SC5.5/SC5.5 Double Station
Approximately 294 lbs (133 kg)



HC5/SC5.5 Double Station
Approximately 414 lbs (188 kg)

HC5/HC5 Double Station
Approximately 540 lbs (245 kg)

HC5/SC5.5/SC5.5 Triple Station
Approximately 558 lbs (253 kg)

Multi-Stream Configurations

Mix & Match for Station Capacity and Waste Stream



Multi-Stream Configurations

Mix & Match for Station Capacity and Waste Stream



Technical Specifications

Overall Dimensions	High Capacity Station (HC5) <i>Smart, Solar-Powered, Compacting Model</i>	Standard Capacity Station (SC5.5) Hub <i>Smart, Self-Powered, Non-Compacting Model</i>	Standard Capacity Station (SC5.5) Companion <i>Smart, Self-Powered, Non-Compacting Model</i>
Height	49.8" (1264 mm)	49.8" (1264 mm)	49.8" (1264 mm)
Width	25" (635 mm)	25" (635 mm)	25.6" (635 mm)
Depth	26.8" (681 mm)	26.8" (681 mm)	26.8" (681 mm)
Handle Height	43.1" (1095 mm)	With Hopper: 43.1" (1095 mm)	With Hopper: 43.1" (1095 mm)
Weight	270 lb (122 kg)	150 lb (68 kg)	144 lb (65 kg)
Shipping Weight	300 lb (136 kg)	180 lb (82 kg)	176 lb (80 kg)
Battery Voltage	12V	4.5V	-
Insertion Opening	6" x 17" (15.2 cm x 43.2 cm)	Can be configured for multiple recycling or waste streams.	Can be configured for multiple recycling or waste streams.
Bin Volume	33 gallons (125 L) compacted; 150 gallons uncompactd	50 gallons (189 L)	50 gallons (189 L)
Liner Bags	Custom High Capacity Liner Bags (#BBS-CB4647 or #BBS-RCB4647) are available for purchase. <i>The black or clear bags are 47"H x 46"W (120cm x 117cm) and 2.5mil (64μ) thick.</i>	Custom Standard Capacity Liner Bags (#BBS-RB4255) are available for purchase. <i>The clear bags are 55"H x 42.5"W (140cm x 108cm) and 1.25mil (32μ) thick.</i>	Custom Standard Capacity Liner Bags (#BBS-RB4255) are available for purchase. <i>The clear bags are 55"H x 42.5"W (140cm x 108cm) and 1.25mil (32μ) thick.</i>

Liner Bags are available from Bigbelly's official provider, WasteZero. Contact WasteZero to order liner bags at +1.800.866.3954 or www.WasteZero.com/Bigbelly/.

Opening Options

Enclosed Hopper (HC5, SC5.5)



Landfill Waste

Recycling

Compost

Open Faceplate (SC5.5)



Landfill Waste

Single Stream Recycling

Bottle & Cans Recycling

Paper Recycling



www.bigbelly.com | info@bigbelly.com
+1-781-444-6002 | © 2018 Bigbelly, Inc.

PLEASE NOTE: Green Hoppers require additional 6 weeks to process.